



Video Remote Interpreter Installation Guide

Dan Nelson

9/20/2011

Contents

Preparation	2
Windows Firewall.....	2
Network Configuration	2
Video Interpreter Client Installation Procedure	3

Preparation

Windows Firewall

If your computer is equipped with Windows Firewall or a 3rd party firewall, ensure the protocols and ports outlined in the [Network Configuration](#) section are opened outbound.

Network Configuration

In order for the Video Interpreter Client to successfully communicate with CTS LanguageLink, your network administrator must open up the following protocols and ports outbound.

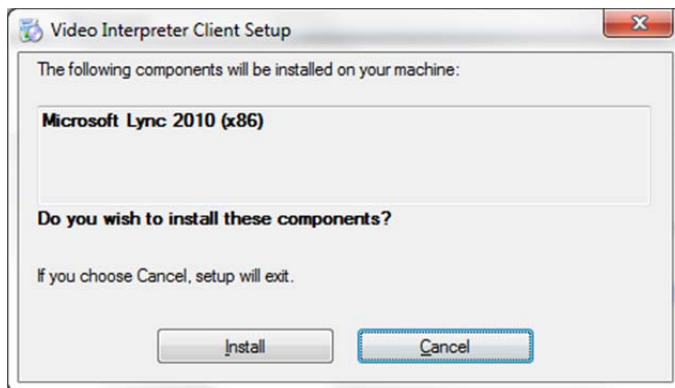
- ➔ TCP/443: Signaling
- ➔ UDP/3478: Media Relay
- ➔ TCP and UDP port range 50000 to 59999: Media

Video Interpreter Client Installation Procedure

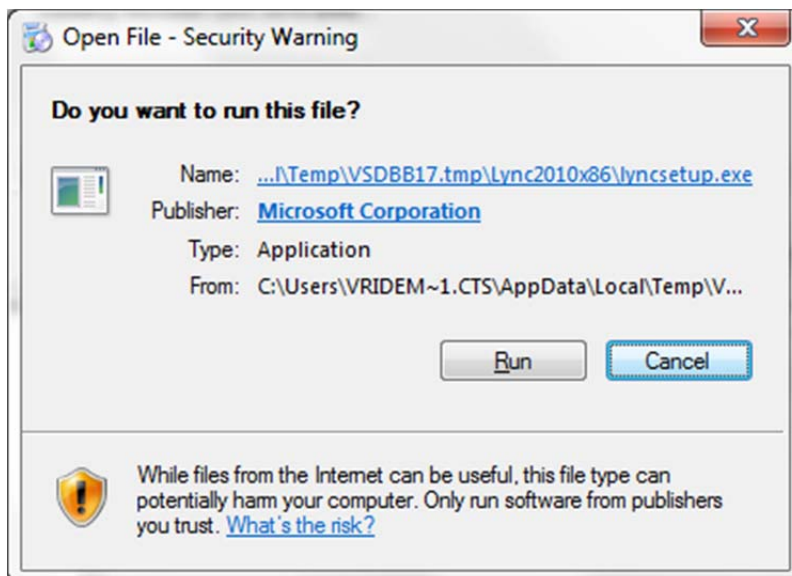
1. Download the Video Interpreter Client to your desktop from our website using the link below.

http://www.healthlinkinterpreters.com/vridownloads/video_interpreter_client_installer.zip

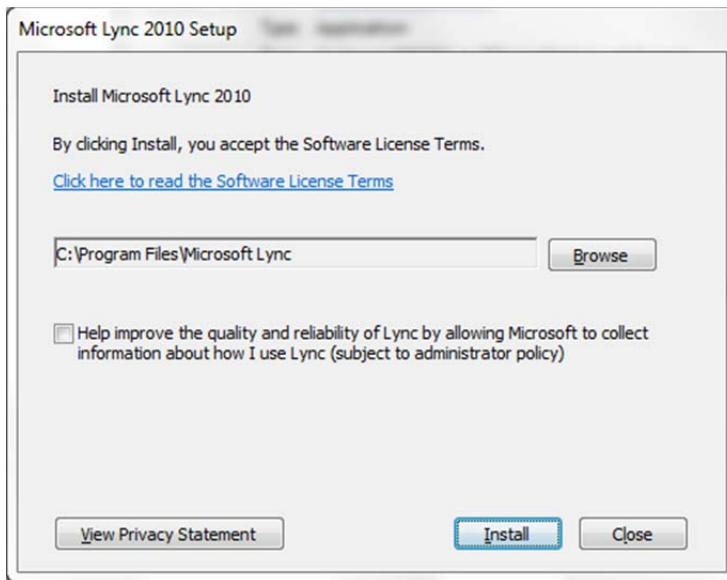
2. Unzip the file to your desktop.
3. Double-click on setup.exe.
4. Press the "Install" button.



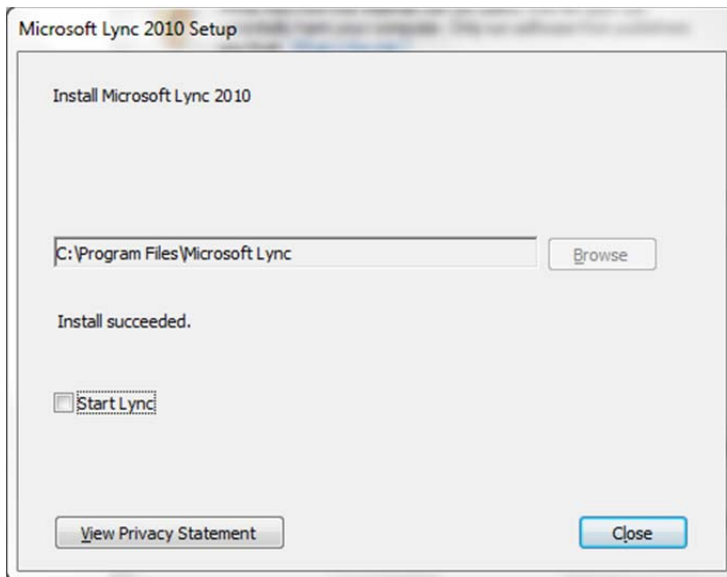
5. Press "Run"



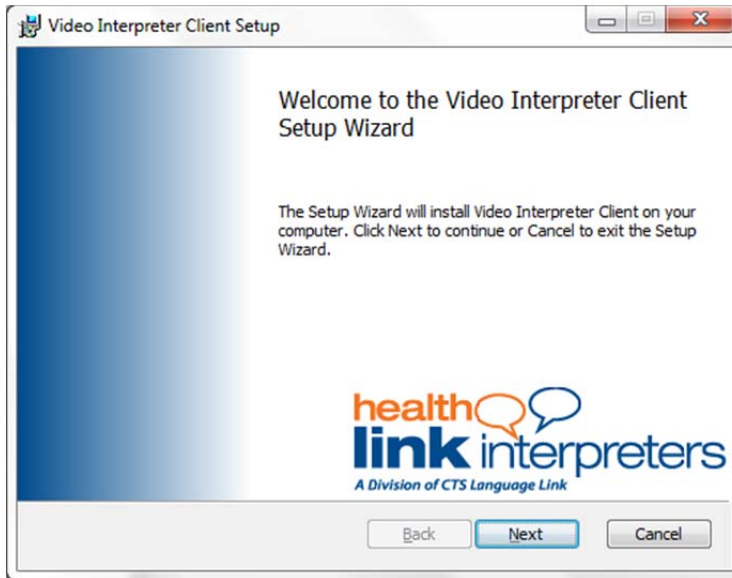
6. Press "Install"



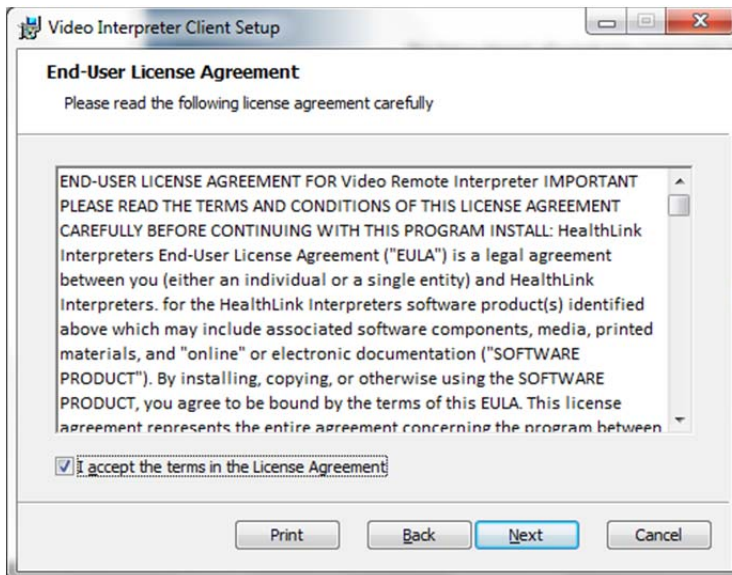
7. Uncheck the "Start Lync" check box and press the "Close" button.



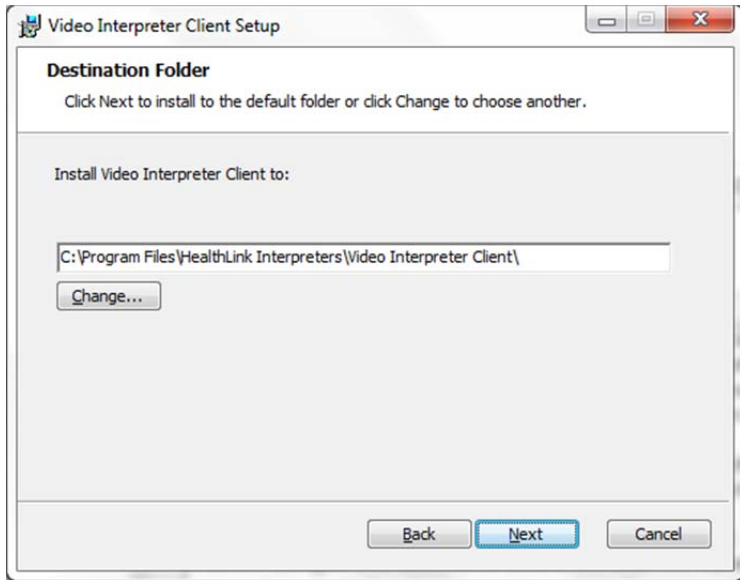
8. Press "Next".



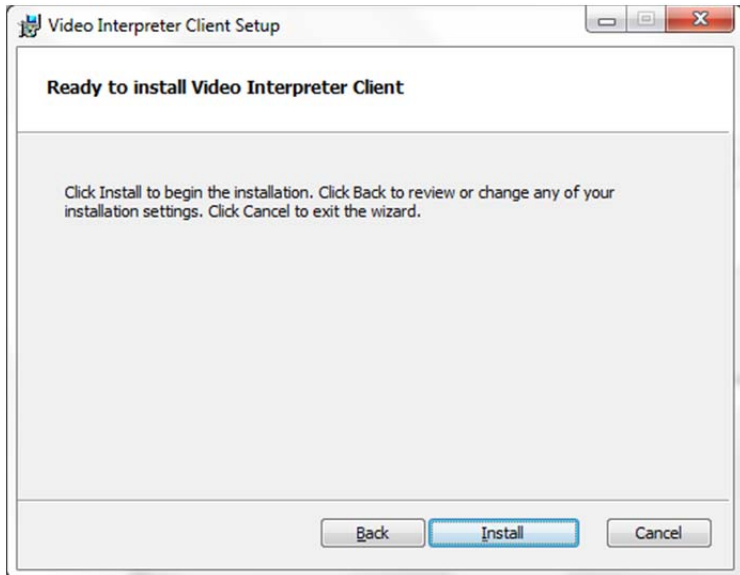
9. Read and accept the license terms and press "Next".



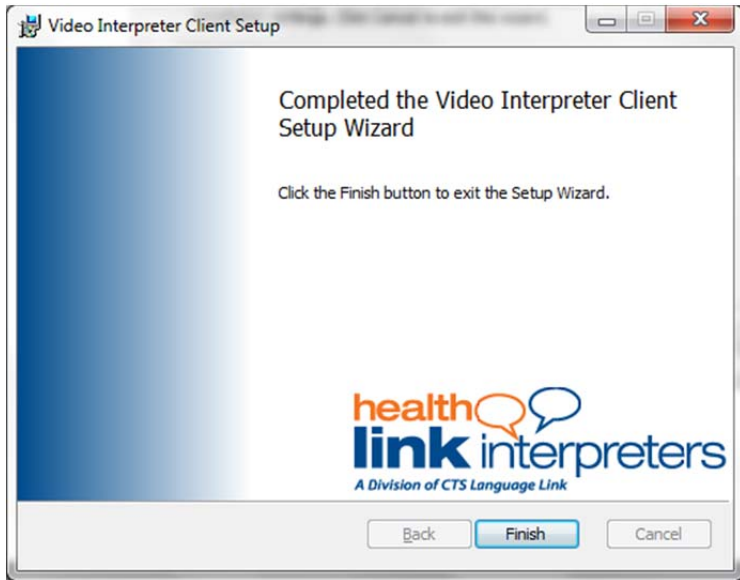
10. Verify the installation path and press “Next”.



11. Press “Install”



12. Press “Finish”



13. Reboot your computer.